



EXCEPTIONAL MEDITERRANEAN STYLE VILLA
101 PLUMTON CT. - SAINT JOHNS
5 BEDROOMS / 4 ½ BATHS / 5,687 SQFT / 3.78 ACRES



WELCOME TO WHITELOCK FARMS, AN EXCLUSIVE AND DESIRABLE EQUESTRIAN COMMUNITY, JUST MINUTES FROM ST. JOHNS RIVER WATER ACCESS AND A SHORT DRIVE TO JACKSONVILLE, ST. AUGUSTINE AND THE BEACHES. THIS STUNNING HOME OFFERS EVERY AMENITY IMAGINABLE. WITH 5 BEDROOMS, 4 ½ BATHS AND ADDITIONAL ROOMS, TWO DETACHED GARAGE BUILDINGS FOR 4 CARS, THIS 5,687 SQFT PROPERTY HAS A FLEXIBLE FLOOR PLAN TO ADAPT TO A VARIETY OF LIVING ARRANGEMENTS.



Beautiful and meticulously designed Mediterranean style villa located in desirable Saint Johns. This one-of-a-kind estate features 5,687 sq ft of living space, high ceilings, solid wood French doors and windows, with marble flooring throughout the entire house. High-end gourmet kitchen with luxurious cherry wood cabinets, top-of-the-line Stainless Steel appliances, gas cook top, granite counters, granite backsplash, and breakfast bar. Custom built in 2007 and lovingly cared for by its original owner. High quality interior detailing unique features like a jaw dropping 2 story ceiling and a private covered back patio. Upstairs balcony lets you enjoy Florida sunrises/sunsets. This home offers a long private driveway connecting to twin 2 car detached garage buildings for 4 cars. Built-in backup generator and underground propane gas storage tank included. Solid concrete construction with special insulation that makes this home very energy efficient. Set on almost 4 acres located in a quiet gem of a small exclusive Equestrian Community and available at a fraction of the area average pricing. A flexible open floorplan to adapt to a variety of living arrangements. The kitchen opens to the living area and a great room. The downstairs master suite has a bathroom with large tub and oversized walk-in shower. The upstairs area is very large and offers multiple options and possibilities of usage. Built-in loudspeakers, security system, 4 A/C units, artesian deep well, water filtration, irrigation system, covered porch outside entertainment area and so much more.



ELEGANT ENTRANCE HALL



HAND CARVED HARDWOOD MAIN DOORS



SPACIOUS FOYER



GREAT ROOM / LIVING ROOM



HIGH VAULTED CEILING



GOURMET KITCHEN



LUXURIOUS CHERRY WOOD CABINETS



HIGH-END STAINLESS STEEL APPLIANCES



GAS COOK TOP



KITCHEN ISLAND & BREAKFAST BAR



GRANITE TOP'S & GRANIT BACK SPLASH



FORMAL DINING ROOM



MARBLE FLOOR ALL OVER THE HOUSE



LARGE MASTER BEDROOM SUITE



WITH GEOMETRIC CEILING FEATURE



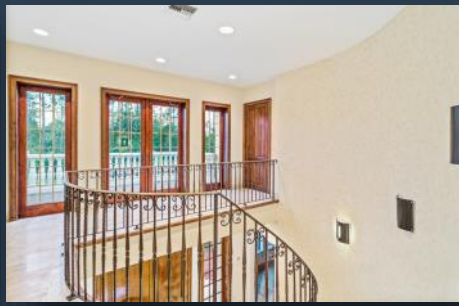
MASTER BATH WITH GRANITE & MARBLE

This home offers space, comfort and a floor plan that suits a life-style applicable to a wide variety of future owners.

No CDD fees. Nearby championship golf courses. Publix grocery, Walgreens and CVS are nearby, and within a few miles from restaurants, doctor's offices and Elementary, Middle & High School(s). Don't miss your opportunity to move to this exclusive community at a fraction of the area average pricing.



GROUND FLOOR GUEST BEDROOM SUITE



ELEGANT STAIR CASE & BALCONY



LARGE FAMILY ROOM / DEN - UPSTAIRS



CAN BE UTILIZED FOR MULTIPLE PURPOSES



3RD BEDROOM SUITE



4TH BEDROOM SUITE W/SITTING ROOM



2 x FULL BATHROOMS UPSTAIRS



5TH BEDROOM / STUDY / OFFICE



LARGE BACKYARD WITH PRIVACY



EXAMPLE RENDERING

Plenty of Room for a Pool to be added.
Artist Rendering showing where a Pool could be placed.



LARGE COVERED BACK PORCH



Phillip Turwitt

Michael Turwitt

904-325-9938

Michael@Turwitt.com

Phillip@Turwitt.com

www.Turwitt.com



THE TURWITT TEAM
YOUR HOME SOLD GUARANTEED OR WE'LL BUY IT

XCELLENCE REALTY